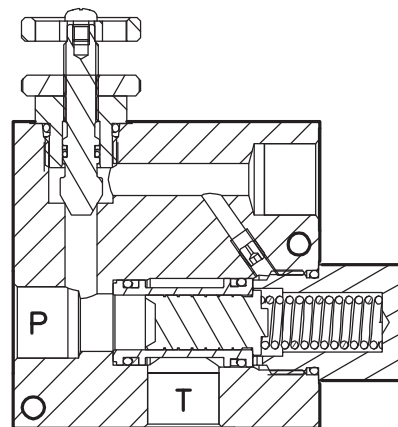
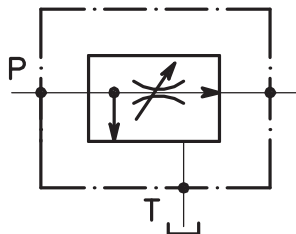
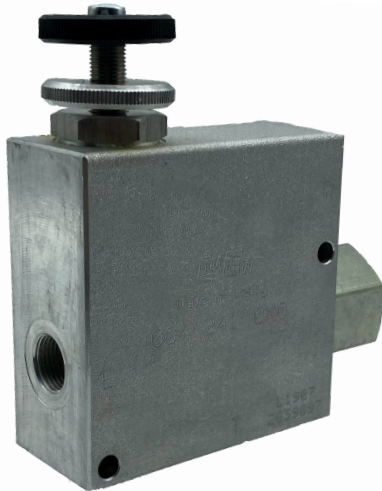




HIDRÁULICA
ROGIMAR

REGULADOR DE CAUDAL DE 3 VIAS CUERPO EN ALUMINIO

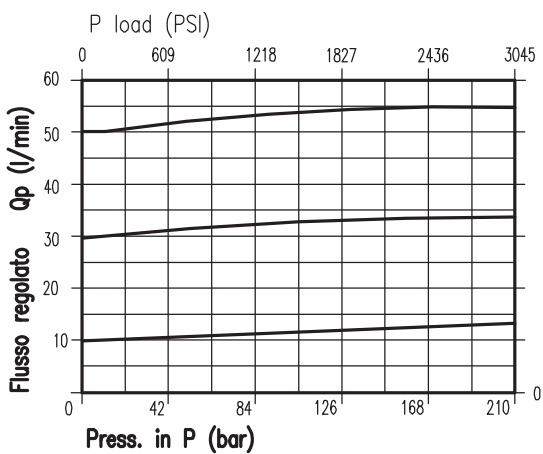


CARATTERISTICHE

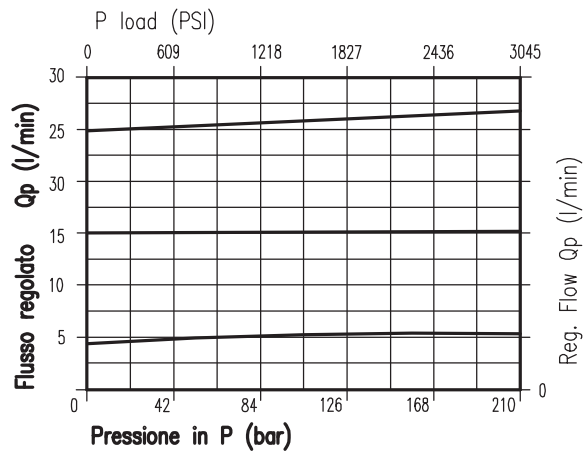
Luce nominale	DN 6/9
Portata min/max	1/90 l/min - 0.26/23.7 GPM
Pressione di lavoro max.	210 bar - 3045 PSI
Temperatura ambiente	-30°C + 50°C
Temperatura olio	-30°C + 80°C
Filtraggio consigliato	50 micron
Peso	1.105 Kg. 3/8" GAS
Peso	1.080 Kg. 1/2" GAS

PERFORMANCE

Rated size
Min/max flow-rate
Max working pressure
Room temperature
Oil temperature
Recommended filtration
Weight
Weight



Viscosita' olio 46 cSt a 50° C ——— 1/2"
Oil viscosity 46 cSt at 50° C



Viscosita' olio 46 cSt a 50° C ——— 3/8"
Oil viscosity 46 cSt at 50° C

Viscosità olio 46 cSt a 50°C / Oil viscosity 46 cSt at 50°C

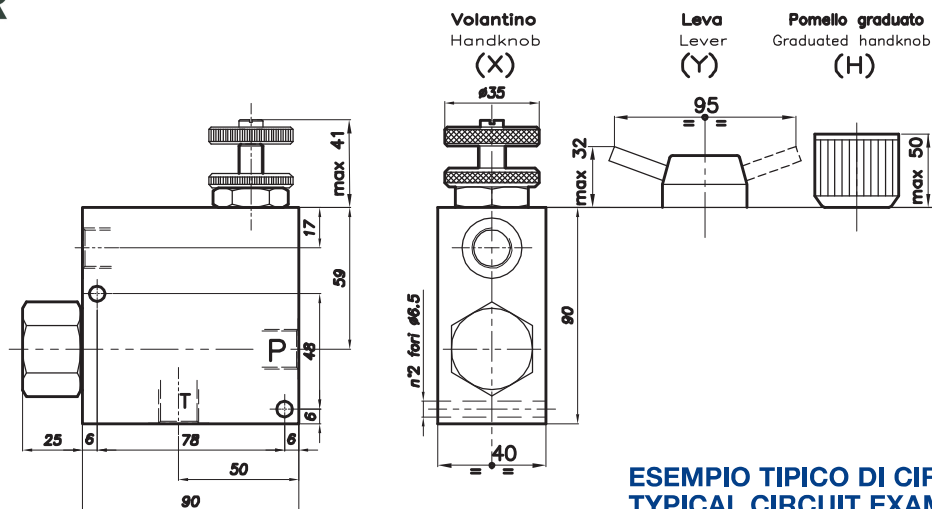


HIDRÁULICA
ROGIMAR

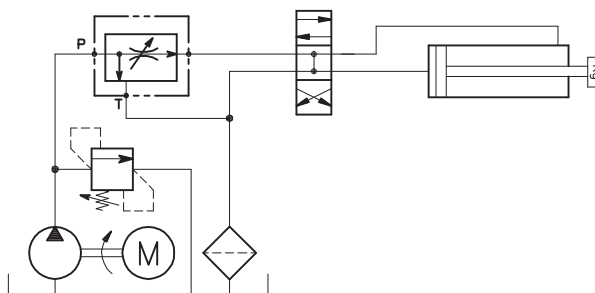
REGULADOR DE CAUDAL

DE 3 VIAS

CUERPO EN ALUMINIO



ESEMPIO TIPICO DI CIRCUITO
TYPICAL CIRCUIT EXAMPLE



DIMENSIONI DIMENSIONS

NUMERO VALVOLA VALVE NUMBER	Attacchi Port size E-P-T GAS (BSPP)	Luce nominale Rated size DN	QE l/min - GPM	QP l/min - GPM	REFERENCIA ROGIMAR
241	3/8"	6	30-7.9	55-14.5	VX8002
242	1/2"	8	55-14.5	90-23.7	VX8003

QP = Portata max in entrata "P" - l/min
QP = Max admitted inlet flow "P" - l/min

QE = Portata max in uscita prioritario "E" - l/min
QE = Max delivery in priority "E" - l/min

CODICE DI ORDINAZIONE HOW TO ORDER

004 242 0 X 0

Numero valvola / Valve number

241

242

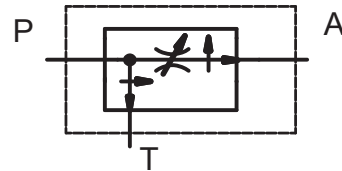
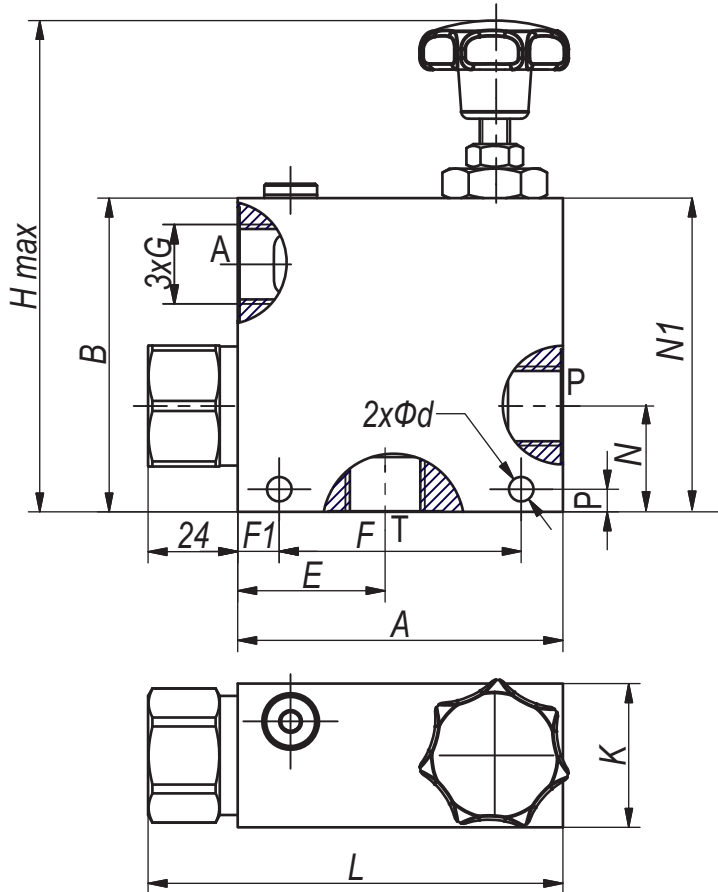
Regolazione
Adjustment

X | Volantino - Handknob
Y | Leva - Lever
H | Pomello graduato - Graduated handknob



HIDRÁULICA
ROGIMAR

VX8002HI / VX8003HI CUERPO EN FUNDICIÓN



Type	P_{max}	Q_{max} [L/min]		G	A	B	E	F	F1	N	N1	P	K	H	H1	L	L1	d
	bar	At port P	At port A															
VX8002HI	250	50	30	G3/8"	86	83	39	64	11	28	65,5	6	38	120	129	110	115	6,5
VX8003HI		80	50	G1/2"														

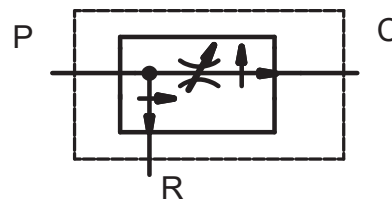
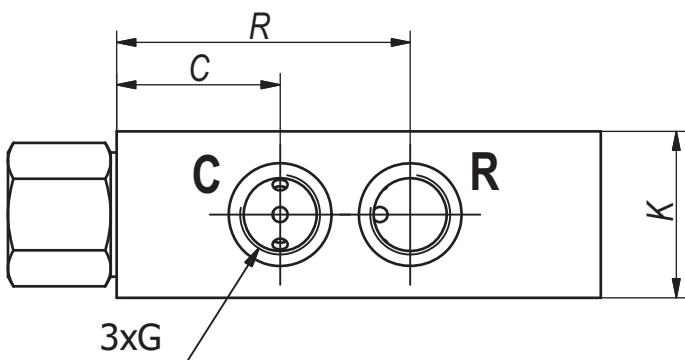
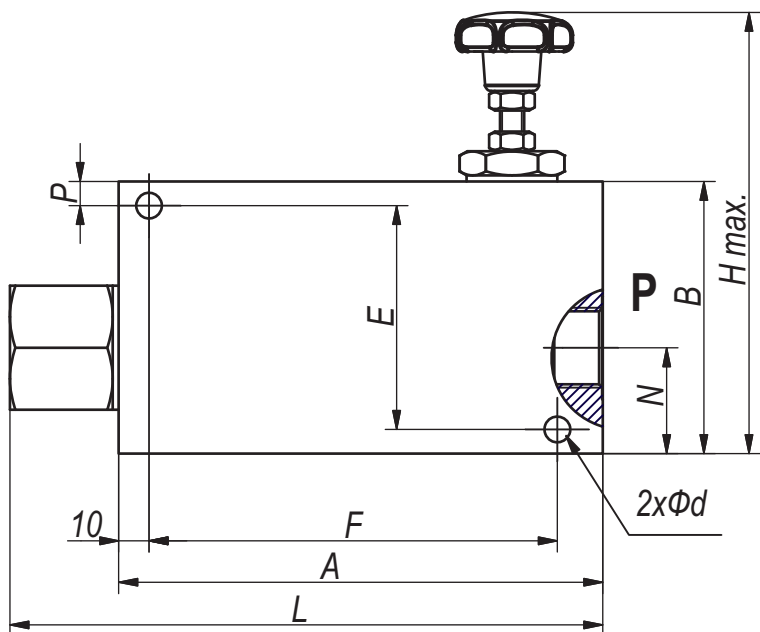
Todas las actuaciones y calibraciones se realizan utilizando aceite hidráulico con una viscosidad aprox. 46 cSt a 50°C
 Rango de Temperatura: -20°C...+80°C
 Filtración recomendada: 25 µm

Hidráulica Rogimar se reserva el derecho de cambiar total o parcialmente cualquier medida e información técnica contenida en este documento sin previo aviso.



HIDRÁULICA
ROGIMAR

VX8004 CUERPO EN FUNDICIÓN

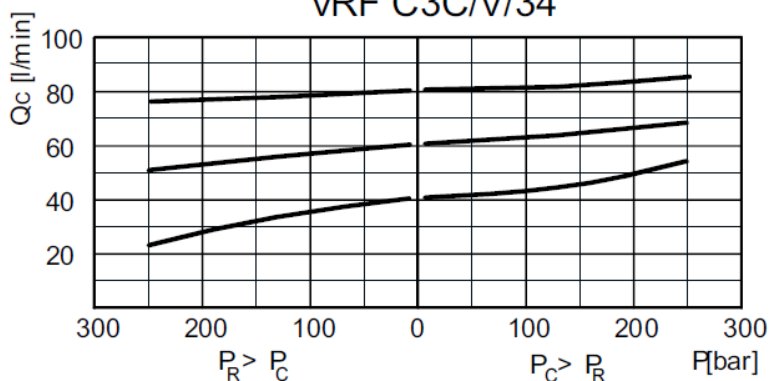


P _{max} bar	Q _{max} [L/min.]		G	A mm	B mm	C mm	E mm	F mm	P mm	K mm	N mm	R mm	H mm	L mm	d mm
	At port P	At port C													
250	165	90	G3/4"	160	90	54	74	135	8	55	35	97	146	196	8,5

Todas las actuaciones y calibraciones se realizan utilizando aceite hidráulico con una viscosidad aprox. 46 cSt a 50°C

Rango de Temperatura: -20°C...+80°C
Filtración recomendada: 25 µm

VRF C3C/N/34



Hidráulica Rogimar se reserva el derecho de cambiar total o parcialmente cualquier medida e información técnica contenida en este documento sin previo aviso.