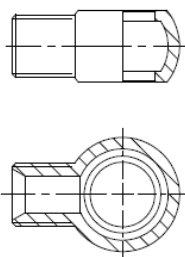


## CIERRE CONICO ROSCA GAS

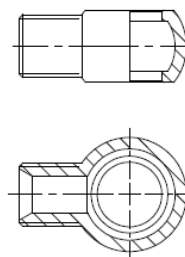
### ESFERICO SOLDABLE

CÓDIGO	ROSCA
BG30010002	1/8"
BG30010004	1/4"
BG30010006	3/8"
BG30010008	1/2"
BG30010012	3/4"
BG30010016	1"
BG30010020	1"1/4
BG30010024	1"1/2



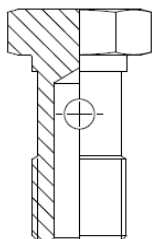
### ESFERICO ROSCADO MACHO

CÓDIGO	ROSCA
BG30030002	ESF 1/8 M 1/8
BG30030004	ESF 1/4 M 1/4
BG30030006	ESF 3/8 M 3/8
BG30030006G	ESF LARGO 3/8 M 3/8
BG30030008	ESF 1/2 M 1/2
BG30030008G	ESF LARGO 1/2 M 1/2
BG30030012	ESF 3/4 M 3/4
BG30030016	ESF 1" M 1"
BG30030020	ESF 1"1/4 M 1"1/4
BG30030024	ESF 1"1/2 M 1"1/2



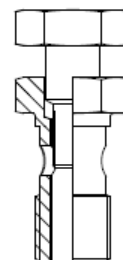
### TORNILLO SIMPLE

CÓDIGO	ROSCA
BG30050002	1/8"
BG30050004	1/4"
BG30050006	3/8"
BG30050008	1/2"
BG30050010	5/8"
BG30050012	3/4"
BG30050016	1"
BG30050020	1"1/4
BG30050024	1"1/2



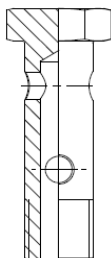
### TORNILLO SIMPLE REGULADOR

CÓDIGO	ROSCA
BG30050004R	1/4"
BG30050006R	3/8"
BG30050008R	1/2"



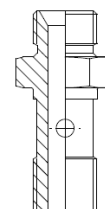
### TORNILLO HUECO DOBLE

CÓDIGO	ROSCA
BG30070002	1/8"
BG30070004	1/4"
BG30070006	3/8"
BG30070008	1/2"
BG30070012	3/4"
BG30070016	1"



### TORNILLO CON PROLONGACION

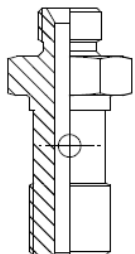
CÓDIGO	ROSCA
BG30090002	1/8"
BG30090004	1/4"
BG30090006	3/8"
BG30090008	1/2"
BG30090012	3/4"
BG30090016	1"



# CIERRE CONICO ROSCA GAS

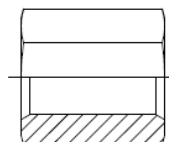
## TORNILLO CON PROLONGACIÓN REDUCTORA

CÓDIGO	ROSCA
BG30110204	1/8" - 1/4"
BG30110406	1/4" - 3/8"
BG30110608	3/8" - 1/2"
BG30110812	1/2" - 3/4"
BG30111216	3/4" - 1"
BG30111620	1" - 1"1/4"



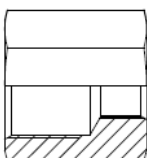
## SUPLEMENTO HEMBRA FIJA

CÓDIGO	ROSCA
BG30120002	1/8"
BG30120004	1/4"
BG30120006	3/8"
BG30120008	1/2"
BG30120012	3/4"
BG30120016	1"
BG30120020	1"1/4"
BG30120024	1"1/2"
BG30120032	2"
BG30120040	2"1/2"



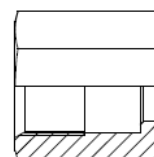
## SUPLEMENTO REDUCTOR HEMBRA FIJA GAS

CÓDIGO	ROSCA
BG30120402	1/4" - 1/8"
BG30120602	3/8" - 1/8"
BG30120604	3/8" - 1/4"
BG30120804	1/2" - 1/4"
BG30120806	1/2" - 3/8"
BG30121204	3/4" - 1/4"
BG30121206	3/4" - 3/8"
BG30121208	3/4" - 1/2"
BG30121608	1" - 1/2"
BG30121612	1" - 3/4"
BG30122012	1"1/4 - 3/4"
BG30122016	1"1/4 - 1"
BG30122420	1"1/2 - 1"1/4"
BG30123220	2" - 1"1/4"
BG30123224	2" - 1"1/2"



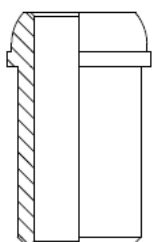
## TUERCA UNION

CÓDIGO	ROSCA
BG30130002	1/8"
BG30130004	1/4"
BG30130006	3/8"
BG30130008	1/2"
BG30130012	3/4"
BG30130016	1"
BG30130020	1"1/4"
BG30130024	1"1/2"
BG30130032	2"
BG30130040	2"1/2"
BG30130048	3"



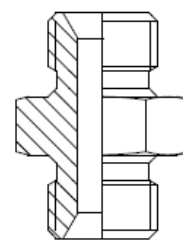
## CONO DE AJUSTE

CÓDIGO	ROSCA
BG30150002	1/8"
BG30150004	1/4"
BG30150006	3/8"
BG30150008	1/2"
BG30150012	3/4"
BG30150016	1"
BG30150020	1"1/4"
BG30150024	1"1/2"
BG30150032	2"
BG30150040	2"1/2"
BG30150048	3"



## EMPALME MACHO

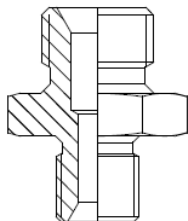
CÓDIGO	ROSCA
BG30170202	1/8"
BG30170404	1/4"
BG30170606	3/8"
BG30170808	1/2"
BG30171010	5/8"
BG30171212	3/4"
BG30171616	1"
BG30172020	1"1/4"
BG30172424	1"1/2"
BG30173232	2"
BG30174040	2"1/2"
BG30174048	3"



## CIERRE CONICO ROSCA GAS

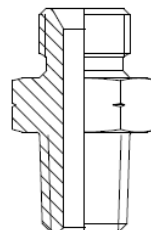
### EMPALME MACHO REDUCTOR GAS

CÓDIGO	ROSCA
BG30190402	MF 1/4 - MF 1/8
BG30190604	MF 3/8 - MF 1/4
BG30190802	MF 1/2 - MF 1/8
BG30190804	MF 1/2 - MF 1/4
BG30190806	MF 1/2 - MF 3/8
BG30191004	MF 5/8 - MF 1/4
BG30191006	MF 5/8 - MF 3/8
BG30191008	MF 5/8 - MF 1/2
BG30191204	MF 3/4 - MF 1/4
BG30191206	MF 3/4 - MF 3/8
BG30191208	MF 3/4 - MF 1/2
BG30191210	MF 3/4 - MF 5/8
BG30191604	MF 1 - MF 1/4
BG30191606	MF 1 - MF 3/8
BG30191608	MF 1 - MF 1/2
BG30191610	MF 1 - MF 5/8
BG30191612	MF 1 - MF 3/4
BG30192008	MF 1.1/4 - MF 1/2
BG30192012	MF 1.1/4 - MF 3/4
BG30192016	MF 1.1/4 - MF 1
BG30192032	MF 2 - MF 1.1/4
BG30192412	MF 1.1/2 - MF 3/4
BG30192416	MF 1.1/2 - MF 1
BG30192420	MF 1.1/2 - MF 1.1/4
BG30193216	MF 2 - MF 1
BG30193220	MF 2 - MF 1.1/4
BG30193224	MF 2 - MF 1.1/2
BG30194032	MF 2.1/2 - MF 2



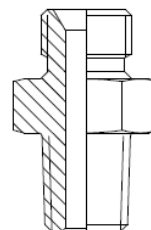
### EMPALME MACHO ( GAS - NPTF )

CÓDIGO	ROSCA
BG30230202	1/8" BSP-1/8" NPT
BG30230404	1/4" BSP-1/4" NPT
BG30230606	3/8" BSP-3/8" NPT
BG30230808	1/2" BSP-1/2" NPT
BG30231212	3/4" BSP-3/4" NPT
BG30231616	1" BSP -1" NPT
BG30232020	1"1/4 BSP-1"1/4 NPT
BG30232424	1"1/2 BSP-1"1/2 NPT
BG30233232	2" BSP- 2" NPT



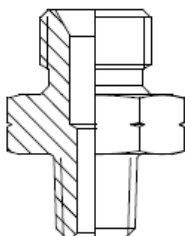
### EMPALME MACHO ( CILINDRICO - CÓNICO )

CÓDIGO	ROSCA
BG30240202	1/8" BSP-1/8" BSPT
BG30240404	1/4" BSP-1/4" BSPT
BG30240606	3/8" BSP-3/8" BSPT
BG30240808	1/2" BSP-1/2" BSPT
BG30241212	3/4" BSP-3/4" BSPT
BG30241616	1" BSP- 1" BSPT
BG30242020	1"1/4 BSP-1"1/4 BSPT
BG30242424	1"1/2 BSP-1"1/2 BSPT
BG30243232	2" BSP- 2" BSPT



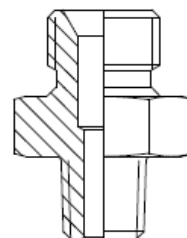
### EMPALME MACHO REDUCTOR ( GAS CILINDRICO - NPTF )

CÓDIGO	ROSCA
BG30250402	1/4 BSP-1/8" NPT
BG30250406	1/4 BSP-3/8" NPT
BG30250604	3/8 BSP-1/4" NPT
BG30250608	3/8 BSP-1/2" NPT
BG30250806	1/2 BSP-3/8" NPT
BG30250812	1/2 BSP-3/4" NPT
BG30251208	3/4 BSP-1/2" NPT
BG30251216	3/4 BSP- 1" NPT
BG30251612	1" BSP-3/4" NPT 1"
BG30251620	BSP-1"1/4 NPT 1"1/4
BG30252012	BSP-3/4" NPT 1"1/4
BG30252016	BSP-1" NPT 1"1/4
BG30252024	BSP-1"1/2 NPT
BG30252420	1"1/2 BSP-1"1/4 NPT
BG30252432	1"1/2 BSP-2" NPT
BG30253224	2" BSP-1"1/2 NPT



### EMPALME MACHO REDUCTOR ( CILINDRICO - CONICO )

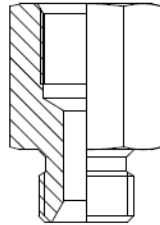
CÓDIGO	ROSCA
BG30260406	1/4" BSP-3/8" BSPT
BG30260604	3/8" BSP-1/4" BSPT
BG30260608	3/8" BSP-1/2" BSPT
BG30260804	1/2" BSP-1/4" BSPT
BG30260806	1/2" BSP-3/8" BSPT
BG30260812	1/2" BSP-3/4" BSPT
BG30260816	1/2" BSP-1" BSPT
BG30261208	3/4" BSP-1/2" BSPT
BG30261216	3/4" BSP-1" BSPT
BG30261612	1" BSP-3/4" BSPT
BG30261620	1" BSP-1"1/4 BSPT
BG30262016	1"1/4 BSP-1" BSPT
BG30262024	1"1/4 BSP-1"1/2 BSPT
BG30262420	1"1/2 BSP-1"1/4 BSPT



## CIERRE CONICO ROSCA GAS

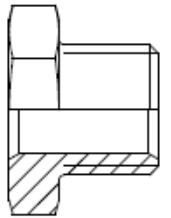
### SULMENTO MACHO-HEMBRA( GAS CILINDRICO )

CÓDIGO	ROSCA
BG30270202	1/8"
BG30270404	1/4"
BG30270606	3/8"
BG30270808	1/2"
BG30271010	5/8"
BG30271212	3/4"
BG30271616	1"
BG30272020	1"1/4
BG30272424	1"1/2
BG30273232	2"



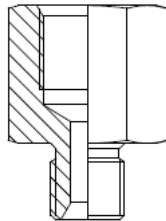
### REDUCTOR MACHO-HEMBRA ( GAS CILÍNDRICO )

CÓDIGO	ROSCA
BG30310402	MF 1/4" - HF 1/8"
BG30310602	MF 3/8" - HF 1/8"
BG30310604	MF 3/8" - HF 1/4"
BG30310804	MF 1/2" - HF 1/4"
BG30310806	MF 1/2" - HF 3/8"
BG30311204	MF 3/4" - HF 1/4"
BG30311206	MF 3/4" - HF 3/8"
BG30311208	MF 3/4" - HF 1/2"
BG30311604	MF 1" - HF 1/4"
BG30311606	MF 1" - HF 3/8"
BG30311608	MF 1" - HF 1/2"
BG30311612	MF 1" - HF 3/4"
BG30312012	MF 1"1/4 - HF 3/4"
BG30312016	MF 1"1/4 - HF 1"
BG30312408	MF 1"1/2 - HF 1/2"
BG30312412	MF 1"1/2 - HF 3/4"
BG30312416	MF 1"1/2 - HF 1"
BG30312420	MF 1"1/2 - HF 1"1/4
BG30313216	MF 2" - HF 1"
BG30313220	MF 2" - HF 1"1/4
BG30313224	MF 2" - HF 1"1/2



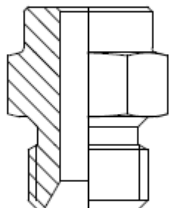
### SUPLEMENTO REDUCTOR HEMBRA-MACHO (GAS CILÍNDRICO)

CÓDIGO	ROSCA
BG30290204	HF 1/8- MF 1/4
BG30290206	HF 1/8- MF 3/8
BG30290208	HF 1/8- MF 1/2
BG30290402	HF 1/4 -MF 1/8
BG30290406	HF 1/4 -MF 3/8
BG30290408	HF 1/4 -MF 1/2
BG30290412	HF 1/4 -MF 3/4
BG30290602	HF 3/8 -MF 1/8
BG30290604	HF 3/8 -MF 1/4
BG30290608	HF 3/8 - MF 1/2
BG30290612	HF 3/8 - MF 3/4
BG30290802	HF 1/2 - MF 1/8
BG30290804	HF 1/2 - MF 1/4
BG30290806	HF 1/2 - MF 3/8
BG30290812	HF 1/2 - MF 3/4
BG30290816	HF 1/2 - MF 1"
BG30291206	HF 3/4 -MF 3/8
BG30291208	HF 3/4 - MF 1/2
BG30291216	HF 3/4 - MF 1"
BG30291608	HF 1" - MF 1/2
BG30291612	HF 1" - MF 3/4
BG30291620	HF 1" - MF 1.1/4
BG30292016	HF 1.1/4 - MF 1"
BG30292024	HF 1.1/4 - MF 1.1/2
BG30292416	HF 1.1/2 - MF 1"
BG30292420	HF 1.1/2 - MF 1.1/4
BG30292432	HF 1.1/2 - MF 2
BG30293224	HF 2 - MF 1.1/2



U ° # = \ ò Q ° " Q ° = - Æ 8 \ V ° O ù - α °

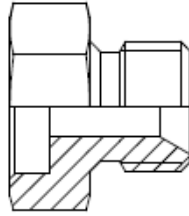
CÓDIGO	ROSCA
BG30350002	1/8"
BG30350004	1/4"
BG30350006	3/8"
BG30350008	1/2"
BG30350012	3/4"
BG30350016	1"
BG30350020	1"1/4
BG30350024	1"1/2
BG30350032	2"



# CIERRE CONICO ROSCA GAS

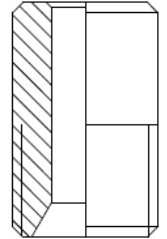
## MACHO SOLDABLE CON HEXAGONAL, ENCAJE

CÓDIGO	ROSCA
BG30370002	1/8"
BG30370004	1/4"
BG30370006	3/8"
BG30370008	1/2"
BG30370012	3/4"
BG30370016	1"
BG30370020	1"1/4
BG30370024	1"1/2
BG30370032	2"
BG30370040	2"1/2



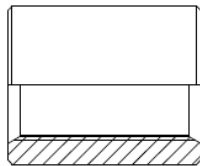
## MACHO SOLDABLE CILINDRICO, TESTA

CÓDIGO	ROSCA
BG30390002	1/8"
BG30390004	1/4"
BG30390006	3/8"
BG30390008	1/2"
BG30390012	3/4"
BG30390016	1"
BG30390020	1"1/4
BG30390024	1"1/2
BG30390032	2"
BG30390040	2"1/2



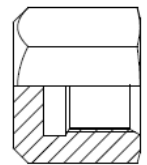
## MANGUITO SOLDABLE CILINDRICO HEMBRA

CÓDIGO	ROSCA
BG30410002	1/8"
BG30410004	1/4"
BG30410006	3/8"
BG30410008	1/2"
BG30410012	3/4"
BG30410016	1"
BG30410020	1"1/4
BG30410024	1"1/2
BG30410032	2"
BG30410040	2"1/2
BG30410048	3"
BG30410064	4"



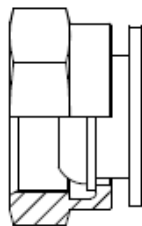
## TUERCA CIEGA

CÓDIGO	ROSCA
BG30430002	1/8"
BG30430004	1/4"
BG30430006	3/8"
BG30430008	1/2"
BG30430010	5/8"
BG30430012	3/4"
BG30430016	1"
BG30430020	1"1/4
BG30430024	1"1/2
BG30430032	2"



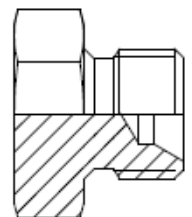
## TAPÓN TUERCA LOCA ( GAS CILINDRICO )

CÓDIGO	ROSCA
BG30440002	1/8"
BG30440004	1/4"
BG30440006	3/8"
BG30440008	1/2"
BG30440010	5/8"
BG30440012	3/4"
BG30440016	1"
BG30440020	1"1/4
BG30440024	1"1/2
BG30440032	2"



## TAPÓN MACHO

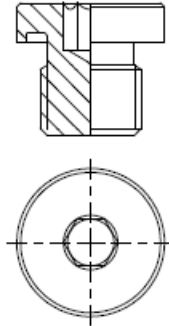
CÓDIGO	ROSCA
BG30450002	1/8"
BG30450004	1/4"
BG30450006	3/8"
BG30450008	1/2"
BG30450010	5/8"
BG30450012	3/4"
BG30450016	1"
BG30450020	1"1/4
BG30450024	1"1/2
BG30450032	2"



## CIERRE CONICO ROSCA GAS

### TAPÓN CILÍNDRICO HEX. INTERIOR Y JUNTA TÓRICA

CÓDIGO	ROSCA
BG30451002ED	1/8" BSPP ED
BG30451004ED	1/4" BSPP ED
BG30451006ED	3/8" BSPP ED
BG30451008ED	1/2" BSPP ED
BG30451012ED	3/4" BSPP ED
BG30451016ED	1" BSPP ED
BG30451020ED	1"1/4 BSPP ED
BG30451024ED	1"1/2 BSPP ED
BG30451032	2" GAS



### JUNTA METAL GOMA ( PULGADAS )

CÓDIGO	ROSCA
BG30470002	1/8"
BG30470004	1/4"
BG30470006	3/8"
BG30470008	1/2"
BG30470010	5/8"
BG30470012	3/4"
BG30470016	1"
BG30470020	1"1/4
BG30470024	1"1/2
BG30470032	2"



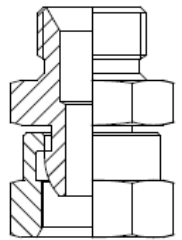
### JUNTA METAL GOMA ( MÉTRICO )

CÓDIGO	ROSCA
BG30470105	M 5
BG30470106	M 6
BG30470108	M 8
BG30470110	M 10
BG30470112	M 12
BG30470114	M 14
BG30470116	M 16
BG30470118	M 18
BG30470120	M 20
BG30470122	M 22
BG30470124	M 24
BG30470126	M 26
BG30470127	M 27
BG30470130	M 30
BG30470131	M 31
BG30470133	M 33
BG30470136	M 36
BG30470142	M 42
BG30470152	M 52



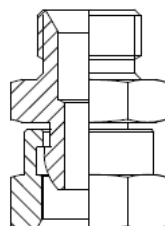
### ADAPTADOR MF-TL REDUCTOR ( GAS CILINDRICO )

CÓDIGO	ROSCA
BG30490204	MF 1/4-TL 1/8
BG30490402	MF 1/8-TL 1/4
BG30490406	MF 3/8-TL 1/4
BG30490604	MF 1/4-TL 3/8
BG30490608	MF 1/2-TL 3/8 G
BG30490804	MF 1/4-TL 1/2
BG30490806	MF 3/8-TL 1/2
BG30490810	MF 5/8-TL 1/2
BG30490812	MF 3/4-TL 1/2
BG30491208	MF 1/2-TL 3/4
BG30491216	MF 1" - TL 3/4
BG30491612	MF 3/4-TL 1"
BG30491612	MF 3/4-TL 1.1/4
BG30492012	MF 1"-TL 1.1/4
BG30492016	MF 1.1/2-TL 1.1/4
BG30492024	MF 1.1/4-TL 1.1/2
BG30492420	MF 1.1/2-TL 1.1/4
BG30493220	MF 1.1/4-TL 2"
BG30493224	MF 1.1/2-TL 2"
BG30494032	MF 2"-TL 2"1/2



### ADAPTADOR MF-TL ( GAS CILINDRICO )

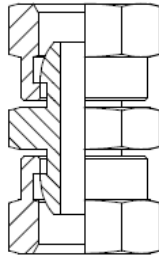
CÓDIGO	ROSCA
BG30490202	1/8"
BG30490404	1/4"
BG30490606	3/8"
BG30490808	1/2"
BG30491010	5/8"
BG30491212	3/4"
BG30491616	1"
BG30492020	1"1/4
BG30492424	1"1/2
BG30493232	2"



# CIERRE CONICO ROSCA GAS

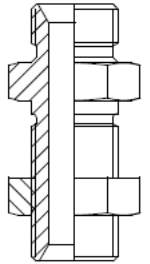
## ADAPTADOR TL - TL ( GAS CILÍNDRICO )

CÓDIGO	ROSCA
BG30500202	1/8"
BG30500404	1/4"
BG30500604	3/8" - 1/4"
BG30500606	3/8"
BG30500806	1/2" - 3/8"
BG30500808	1/2"
BG30501010	5/8"
BG30501208	3/4" - 1/2"
BG30501212	3/4"
BG30501616	1"
BG30502020	1"1/4
BG30502424	1"1/2
BG30503232	2"



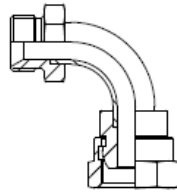
## EMPALME PASATABIQUES ( GAS CILÍNDRICO )

CÓDIGO	ROSCA
BG30510202	1/8"
BG30510404	1/4"
BG30510606	3/8"
BG30510808	1/2"
BG30511010	5/8"
BG30511212	3/4"
BG30511616	1"
BG30512020	1"1/4
BG30512424	1"1/2
BG30513232	2"



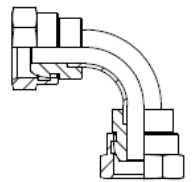
## CODO 90° ACCESORIAL MF - TL

CÓDIGO	ROSCA
BG30530404	1/4"
BG30530606	3/8"
BG30530808	1/2"
BG30531212	3/4"
BG30531616	1"
BG30532020	1"1/4
BG30532424	1"1/2
BG30533232	2"



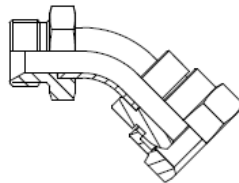
## CODO 90° ACCESORIAL TL - TL

CÓDIGO	ROSCA
BG30540404	1/4"
BG30540606	3/8"
BG30540808	1/2"
BG30541212	3/4"
BG30541616	1"
BG30542020	1"1/4
BG30542424	1"1/2
BG30543232	2"



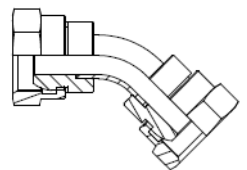
## CODO 45° ACCESORIAL MF - TL

CÓDIGO	ROSCA
BG30550404	1/4"
BG30550606	3/8"
BG30550808	1/2"
BG30551212	3/4"
BG30551616	1"
BG30552020	1"1/4
BG30552424	1"1/2
BG30553232	2"



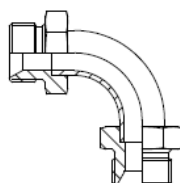
## CODO 45° ACCESORIAL TL - TL

CÓDIGO	ROSCA
BG30560404	1/4"
BG30560606	3/8"
BG30560808	1/2"
BG30561212	3/4"
BG30561616	1"
BG30562020	1"1/4
BG30562424	1"1/2
BG30563232	2"



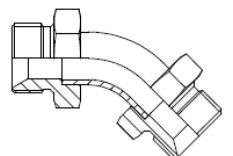
## CODO 90° ACCESORIAL MF - MF

CÓDIGO	ROSCA
BG30570404	1/4"
BG30570606	3/8"
BG30570808	1/2"
BG30571212	3/4"
BG30571616	1"
BG30572020	1"1/4
BG30572424	1"1/2
BG30573232	2"



## CODO 45° ACCESORIAL MF - MF

CÓDIGO	ROSCA
BG30580404	1/4"
BG30580606	3/8"
BG30580808	1/2"
BG30581212	3/4"
BG30581616	1"
BG30582020	1"1/4
BG30582424	1"1/2
BG30583232	2"



# CIERRE CONICO ROSCA GAS

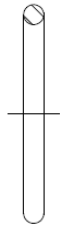
## ARANDELA HIERRO ( GAS )

CÓDIGO	ROSCA
BG30610002	1/8"
BG30610004	1/4"
BG30610006	3/8"
BG30610008	1/2"
BG30610012	3/4"
BG30610016	1"
BG30610020	1"1/4
BG30610024	1"1/2



## JUNTA TÓRICA

CÓDIGO	ROSCA
BG30630002	1/8"
BG30630004	1/4"
BG30630006	3/8"
BG30630008	1/2"
BG30630012	3/4"
BG30630016	1"
BG30630020	1"1/4
BG30630024	1"1/2



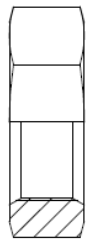
## JUNTA ED ( GAS )

CÓDIGO	ROSCA
BG30631002	1/8"
BG30631004	1/4"
BG30631006	3/8"
BG30631008	1/2"
BG30631012	3/4"
BG30631016	1"
BG30631020	1"1/4
BG30631024	1"1/2
BG30631032	2"



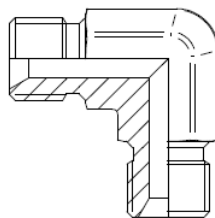
## TUERCA PASATABIQUES

CÓDIGO	ROSCA
BG30650002	1/8"
BG30650004	1/4"
BG30650006	3/8"
BG30650008	1/2"
BG30650010	5/8"
BG30650012	3/4"
BG30650016	1"
BG30650020	1"1/4
BG30650024	1"1/2
BG30650032	2"
BG30650032	2"1/2



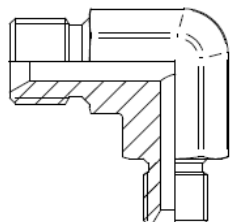
## CODO 90° MACHO ( GAS CILÍNDRICO )

CÓDIGO	ROSCA
BG34010202	1/8"
BG34010404	1/4"
BG34010606	3/8"
BG34010808	1/2"
BG34011010	5/8"
BG34011212	3/4"
BG34011616	1"
BG34012020	1"1/4
BG34012424	1"1/2
BG34013232	2"



## CODO 90° REDUCTOR MF ( GAS CILÍNDRICO )

CÓDIGO	ROSCA
BG34030402	1/4" - 1/8"
BG34030604	3/8" - 1/4"
BG34030806	1/2" - 3/8"
BG34031206	3/4" - 3/8"
BG34031208	3/4" - 1/2"
BG34031612	1" - 3/4"
BG34032016	1"1/4 - 1"
BG34032420	1"1/2 - 1"1/4
BG34033224	2" - 1"1/2

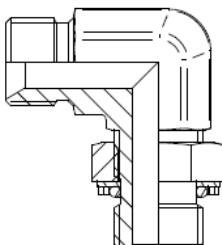




# CIERRE CONICO ROSCA GAS

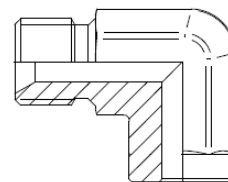
## CODO 90° ORIENTABLE MF ( GAS CILÍNDRICO )

CÓDIGO	ROSCA
BG34050202	ORIENTABLE 1/8
BG34050404	ORIENTABLE 1/4
BG34050406	1/4 ORIENT 3/8
BG34050604	3/8 ORIENT 1/4
BG34050606	ORIENTABLE 3/8
BG34050608	3/8 ORIENT 1/2
BG34050806	1/2 ORIENT 3/8
BG34050808	ORIENTABLE 1/2
BG34050812	1/2 ORIENT 3/4
BG34051208	3/4 ORIENT 1/2
BG34051212	ORIENTABLE 3/4
BG34051216	3/4 ORIENT 1"
BG34051612	1" ORIENT 3/4
BG34051616	ORIENTABLE 1"
BG34051620	1"-ORIENT 1.1/4
BG34052016	1.1/4"- ORIENT 1"
BG34052020	ORIENTABLE 1.1/4"
BG34052424	ORIENTABLE 1.1/2"



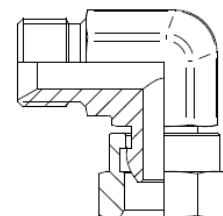
## CODO 90° SOLDABLE ( GAS CILÍNDRICO )

CÓDIGO	ROSCA
BG34070002	1/8"
BG34070004	1/4"
BG34070006	3/8"
BG34070008	1/2"
BG34070012	3/4"
BG34070016	1"



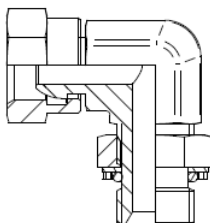
## CODO 90° MF - TL ( GAS CILÍNDRICO )

CÓDIGO	ROSCA
BG34090202	1/8"
BG34090404	1/4"
BG34090606	3/8"
BG34090808	1/2"
BG34091010	5/8"
BG34091212	3/4"
BG34091616	1"
BG34092020	1"1/4
BG34092424	1"1/2
BG34093232	2"



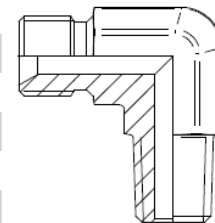
## CODO 90° TL - MF ORIENTABLE ( GAS CILÍNDRICO )

CÓDIGO	ROSCA
BG34100202	1/8"
BG34100404	1/4"
BG34100606	3/8"
BG34100808	1/2"
BG34101212	3/4"
BG34101616	1"
BG34102020	1"1/4



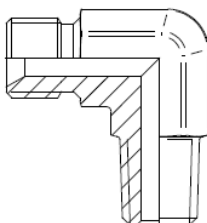
## CODO 90° MF - MF ( GAS CILÍNDRICO - NPTF )

CÓDIGO	ROSCA
BG34110202	1/8" BSP-1/8 NPT
BG34110404	1/4" BSP-1/4 NPT
BG34110606	3/8" BSP-3/8 NPT
BG34110808	1/2" BSP-1/2 NPT
BG34111212	3/4" BSP-3/4 NPT
BG34111616	1" BSP-1" NPT
BG34112020	1"1/4 BSP-1"1/4 NPT
BG34112424	1"1/2 BSP-1"1/2 NPT
BG34113232	2" BSP- 2" NPT



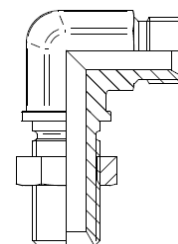
## CODO 90° MF - MF ( GAS CILÍNDRICO - CÓNICO )

CÓDIGO	ROSCA
BG34120202	1/8" BSPP - BSPT
BG34120404	1/4" BSPP - BSPT
BG34120606	3/8" BSPP - BSPT
BG34120808	1/2" BSPP - BSPT
BG34121212	3/4" BSPP - BSPT
BG34121612	1" BSPP - BSPT
BG34121616	1"1/4 BSPP - BSPT
BG34122020	1"1/2 BSPP - BSPT
BG34122424	2" BSPP - BSPT



## CODO 90° PASATABIQUES ( GAS CILÍNDRICO )

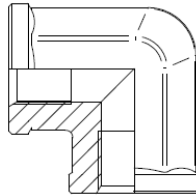
CÓDIGO	ROSCA
BG34130202	1/8"
BG34130404	1/4"
BG34130606	3/8"
BG34130808	1/2"
BG34131212	3/4"
BG34131616	1"
BG34132020	1"1/4



# CIERRE CONICO ROSCA GAS

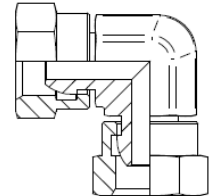
## CODO 90° HEMBRA ( GAS CILÍNDRICO )

CÓDIGO	ROSCA
BG34150202	1/8"
BG34150404	1/4"
BG34150606	3/8"
BG34150808	1/2"
BG34151212	3/4"
BG34151616	1"
BG34152020	1"1/4
BG34152424	1"1/2
BG34153232	2"



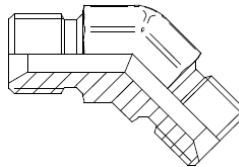
## CODO 90° TL-TL ( GAS CILÍNDRICO )

CÓDIGO	ROSCA
BG34190202	1/8"
BG34190404	1/4"
BG34190606	3/8"
BG34190808	1/2"
BG34191212	3/4"
BG34191616	1"
BG34192020	1"1/4
BG34192424	1"1/2



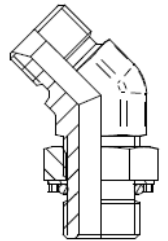
## CODO 45° MACHO ( GAS CILÍNDRICO )

CÓDIGO	ROSCA
BG34410404	1/8"
BG34410606	1/4"
BG34410808	3/8"
BG34411212	1/2"
BG34411616	3/4"
BG34412020	1"
BG34412424	1"1/4



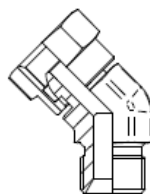
## CODO 45° ORIENTABLE ( GAS CILÍNDRICO )

CÓDIGO	ROSCA
BG34450202	1/8"
BG34450404	1/4"
BG34450606	3/8"
BG34450808	1/2"
BG34451212	3/4"
BG34451616	1"
BG34452020	1"1/4
BG34452424	1"1/2



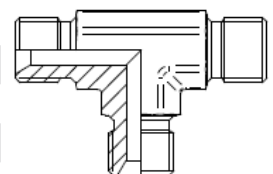
## CODO 45° MF - TL ( GAS CILÍNDRICO )

CÓDIGO	ROSCA
BG34490202	1/8"
BG34490404	1/4"
BG34490606	3/8"
BG34490808	1/2"
BG34491212	3/4"
BG34491616	1"
BG34492020	1"1/4
BG34492424	1"1/2



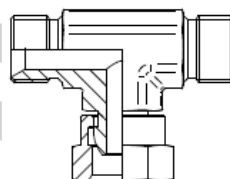
## TE M - M - M ( GAS CILÍNDRICO )

CÓDIGO	ROSCA
BG34510202	1/8"
BG34510404	1/4"
BG34510606	3/8"
BG34510808	1/2"
BG34511212	3/4"
BG34511616	1"
BG34512020	1"1/4
BG34512424	1"1/2
BG34513232	2"



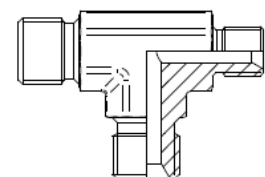
## TE MF - TL CENTRAL ( GAS CILÍNDRICO )

CÓDIGO	ROSCA
BG34550202	1/8"
BG34550404	1/4"
BG34550606	3/8"
BG34550808	1/2"
BG34551010	5/8"
BG34551212	3/4"
BG34551616	1"
BG34552020	1"1/4
BG34552424	1"1/2
BG34553232	2"



## TE REDUCTOR MACHO ( GAS CILÍNDRICO )

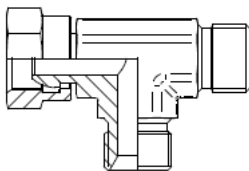
CÓDIGO	ROSCA
BG34530402	1/4 - 1/8
BG34530604	3/8 - 1/4
BG34530806	1/2 - 3/8
BG34531208	3/4 - 1/2
BG34531612	1" - 3/4



## CIERRE CONICO ROSCA GAS

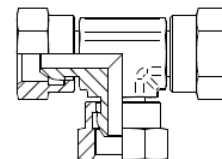
### TE MF-TL LATERAL ( GAS CILÍNDRICO )

CÓDIGO	ROSCA
BG34590202	1/8"
BG34590404	1/4"
BG34590606	3/8"
BG34590808	1/2"
BG34591010	5/8"
BG34591212	3/4"
BG34591616	1"
BG34592020	1"1/4
BG34592424	1"1/2
BG34593232	2"



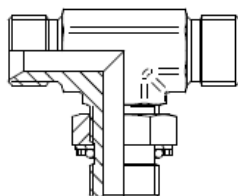
### TE TUERCA LOCA ( GAS CILÍNDRICO )

CÓDIGO	ROSCA
BG34600404	1/4"
BG34600606	3/8"
BG34600808	1/2"
BG34601212	3/4"
BG34601616	1"
BG34602020	1"1/4
BG34602424	1"1/2



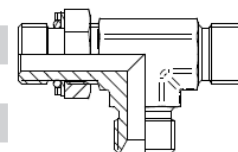
### TF MF -ORIENTABLE CENTRAL ( GAS CILÍNDRICO )

CÓDIGO	ROSCA
BG34610202	1/8"
BG34610404	1/4"
BG34610606	3/8"
BG34610808	1/2"
BG34611212	3/4"
BG34611616	1"
BG34612020	1"1/4



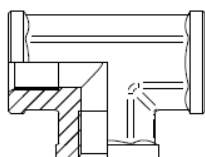
### TF MF -ORIENTABLE LATERAL ( GAS CILÍNDRICO )

CÓDIGO	ROSCA
BG34630202	1/8"
BG34630404	1/4"
BG34630606	3/8"
BG34630808	1/2"
BG34631212	3/4"
BG34631616	1"
BG34632020	1"1/4



### TE HEMBRA ( GAS CILINDRICO )

CÓDIGO	ROSCA
BG34650202	1/8"
BG34650404	1/4"
BG34650606	3/8"
BG34650808	1/2"
BG34651212	3/4"
BG34651616	1"
BG34652020	1"1/4
BG34652424	1"1/2
BG34653232	2"



### CRUZ HEMBRA FIJA

CÓDIGO	ROSCA
BG34950202	1/8"
BG34950404	1/4"
BG34950606	3/8"
BG34950808	1/2"
BG34951212	3/4"
BG34951616	1"

