

CARATTERISTICHE

| | |
|---------------------------------|-----------------------------------|
| Luce nominale | DN 8/10 |
| Portata min/max | 1/60 l/min - 0.26/15.9 GPM |
| Pressione max. di picco | 450 bar - 6525 PSI |
| Pressione max. di taratura | 350 bar - 5075 PSI |
| Rapporto di pilotaggio standard | 4.25 : 1 |
| Temperatura ambiente | -30°C + 50°C |
| Temperatura olio | -30°C + 80°C |
| Filtraggio consigliato | 30 micron |
| Peso | |

PERFORMANCE

| |
|------------------------|
| Rated size |
| Min/max flow-rate |
| Max peak pressure |
| Max setting pressure |
| Standard pilot ratio |
| Room temperature |
| Oil temperature |
| Recommended filtration |
| Weight |

NOTE:

La taratura deve essere **1.3** volte maggiore della pressione indotta dal carico.

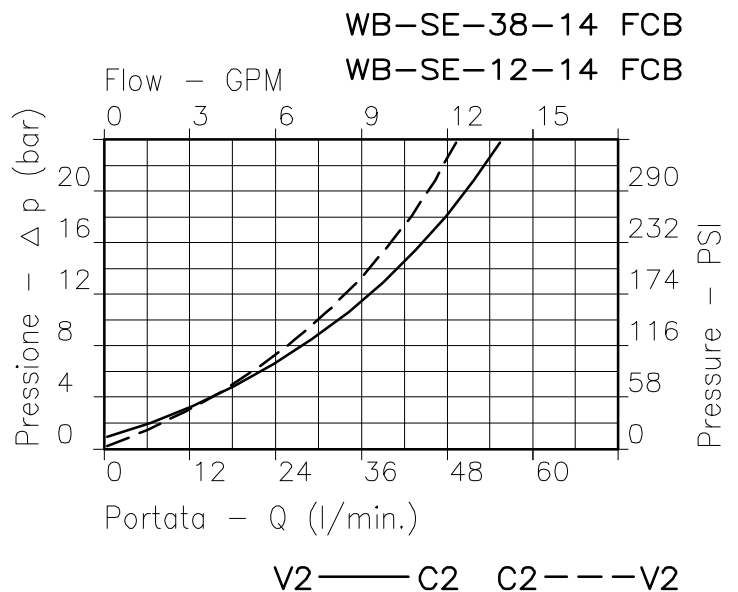
Valve should be set at **1.3** times load induced pressure.

ESEMPIO/EXAMPLE:

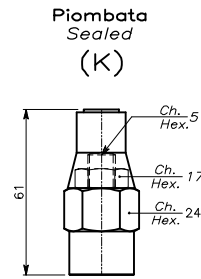
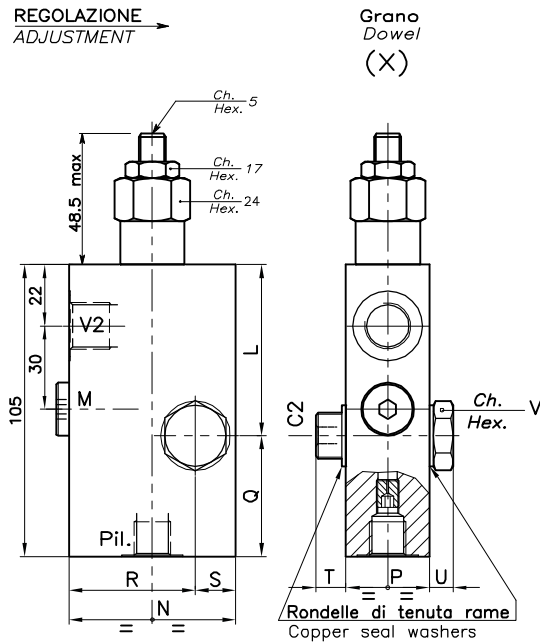
Pressione di lavoro max:

Max working pressure:

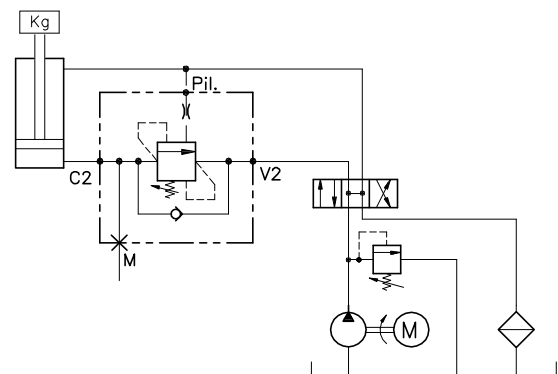
350 bar / 1.3 = 270 bar



Viscosità olio 46 cSt a 50°C
 Oil viscosity 46 cSt at 50°C



ESEMPIO TIPICO DI CIRCUITO TYPICAL CIRCUIT EXAMPLE



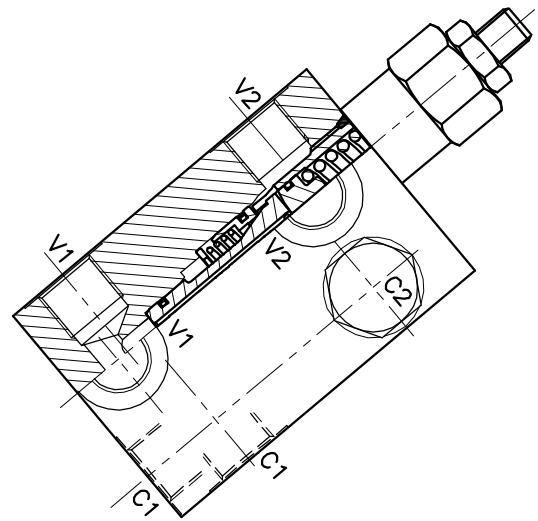
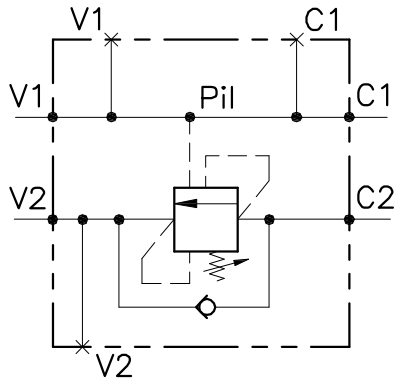
DIMENSIONI DIMENSIONS

| Campo taratura Setting range | | L | N | P | Q | R | S | T | U | V | Attacchi Port size V2-C2 GAS (BSP) | Attacchi Port size M-PIL GAS (BSP) | Portata max Max flow-rate l/min - GPM |
|---------------------------------|-----|------|----|------|------|----|----|----|---|----|---|---|---|
| 613 | 614 | 61.5 | 60 | 29.5 | 43.5 | 46 | 14 | 12 | 8 | 22 | 3/8" | 1/4" | 40-10 |
| 615 | 616 | 63 | 70 | 34.5 | 42 | 55 | 15 | 12 | 8 | 27 | 1/2" | 1/4" | 60-15 |

CODICE DI ORDINAZIONE HOW TO ORDER

N01 . 613 . 0 X 0 . A

| Campo taratura / Setting range | | | | Rapporto di pilotaggio Pilot ratios | | Regolazione Adjustment | | Collettore Body | |
|---|----------------------------------|---|----------------------------------|--|---|---------------------------|-------------------|--------------------|--------------------------------------|
| 613 | | 614 | | A | Ø 0,7 mm | X | Grano - Dowel | A | Acciaio zincato Zinc plated steel |
| 615 | | 616 | | B | Ø 1 mm | K | Piombata - Sealed | | |
| Campo taratura 30÷220 bar (molla colore verde) Setting range 30÷220 bar (green spring) | | Campo taratura 60÷350 bar (molla colore giallo) Setting range 60÷350 bar (yellow spring) | | C | Ø 1,2 mm | | | | |
| Taratura standard (Q=5 l/1') | Incr. press. - bar giro/vite | Taratura standard (Q=5 l/1') | Incr. press. - bar giro/vite | D | Senza grano Without dowel Rapp.pilot Pilot Ratio 8 : 1 | | | | |
| Std. bar setting (Q=5 l/1') | Pressure rise - turn of screw | Std. bar setting (Q=5 l/1') | Pressure rise - turn of screw | O | Senza grano Without dowel | | | | |
| 180 bar | (50) | 250 bar | (90) | | | | | | |
| 613 | | Collettore possibile in AL togliendo "A" | | | | | | | |
| 614 | | Available aluminium body without "A" | | | | | | | |



CARATTERISTICHE

| | |
|---------------------------------|-----------------------------------|
| Luce nominale | DN 8/10 |
| Portata min/max | 1/60 l/min - 0.26/15.9 GPM |
| Pressione max. di picco | 450 bar - 6525 PSI |
| Pressione max. di taratura | 350 bar - 5075 PSI |
| Rapporto di pilotaggio standard | 4.25 : 1 |
| Temperatura ambiente | -30°C + 50°C |
| Temperatura olio | -30°C + 80°C |
| Filtraggio consigliato | 30 micron |
| Peso | |

PERFORMANCE

| |
|------------------------|
| Rated size |
| Min/max flow-rate |
| Max peak pressure |
| Max setting pressure |
| Standard pilot ratio |
| Room temperature |
| Oil temperature |
| Recommended filtration |
| Weight |

NOTE:

La taratura deve essere **1.3** volte maggiore della pressione indotta dal carico.

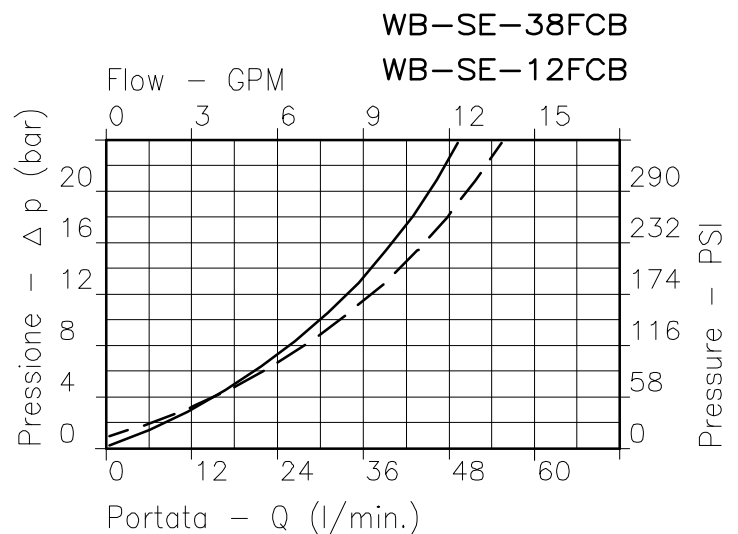
Valve should be set at **1.3** times load induced pressure.

ESEMPIO/EXAMPLE:

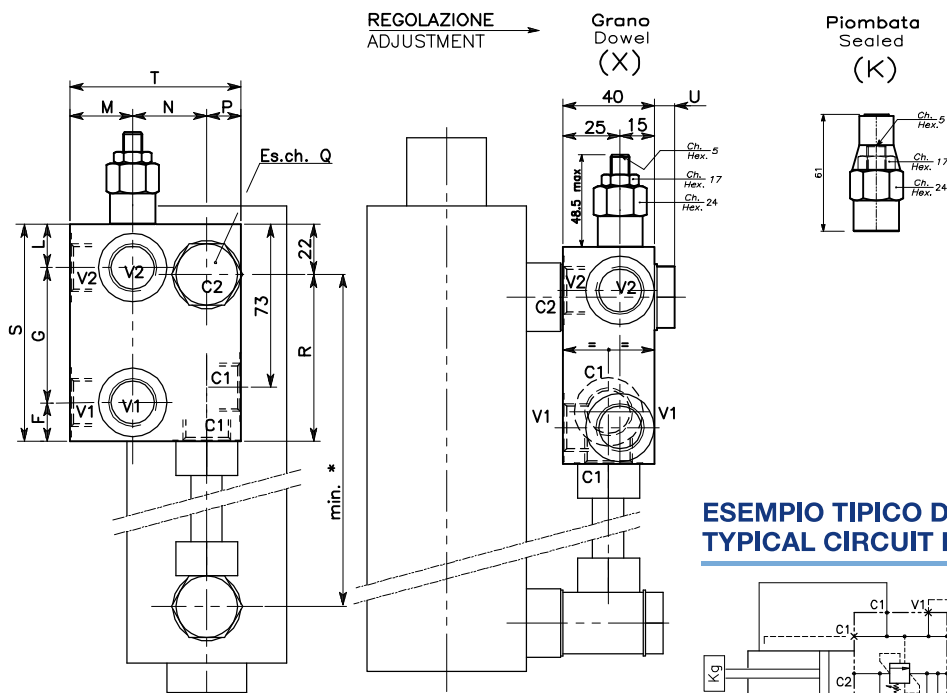
Pressione di lavoro max:

Max working pressure:

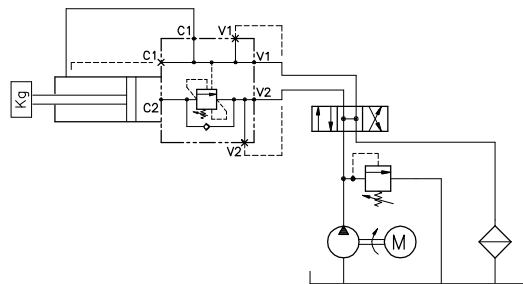
350 bar / 1.3 = 270 bar



Viscosità olio 46 cSt a 50°C
Oil viscosity 46 cSt at 50°C



**ESEMPIO TIPICO DI CIRCUITO
TYPICAL CIRCUIT EXAMPLE**



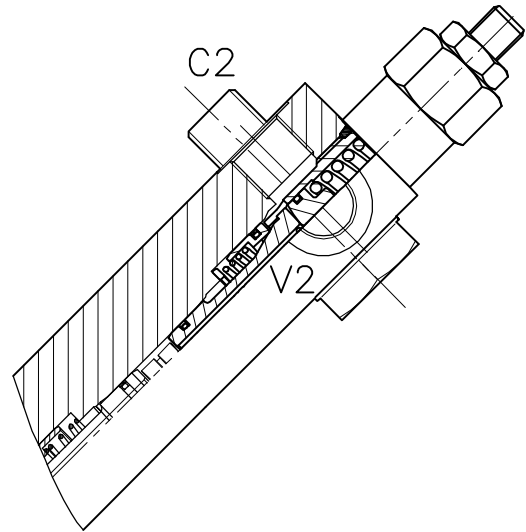
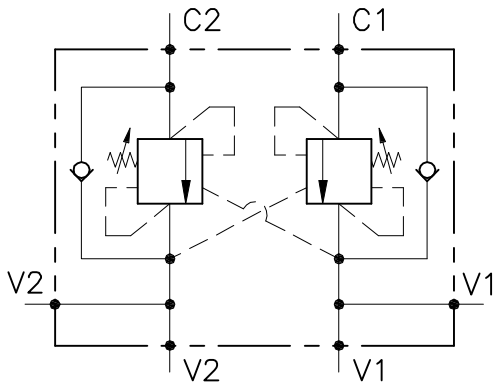
**DIMENSIONI
DIMENSIONS**

| Campo taratura Setting range | F | G | L | M | N | P | Q | R | S | T | U | V | Attacchi Port size V2-C2 GAS (BSPP) | Luce nominale Rated size DN | Portata max Max flow-rate l/min - GPM |
|---------------------------------|----|----|----|----|----|----|----|----|----|----|----|----|--|-----------------------------------|---|
| 284 | 16 | 53 | 21 | 25 | 27 | 13 | 22 | 68 | 90 | 65 | 9 | 11 | 3/8" | 8 | 40-10 |
| 285 | 16 | 60 | 19 | 27 | 32 | 16 | 27 | 73 | 95 | 75 | 10 | 16 | 1/2" | 10 | 60-15 |

**CODICE DI ORDINAZIONE
HOW TO ORDER**

N01 . 284 . 0 X 0 . A

| | | | | | | | |
|---|--|--|----------|--|-------------------|--------------------|--------------------------------------|
| Campo taratura / Setting range | | Rapporto di pilotaggio Pilot ratios | | Regolazione Adjustment | | Collettore Body | |
| 284 | | O | 4,25 : 1 | X | Grano - Dowel | A | Acciaio zincato Zinc plated steel |
| 285 | | D | 8 : 1 | K | Piombata - Sealed | | |
| Campo taratura 60÷350 bar (molla colore giallo) Setting range 60÷350 bar (yellow spring) | | Taratura standard (Q=5 l/1') Std. bar setting Q=5 l/1') | | Incr. press. - bar giro/vite Pressure rise - turn of screw | | | |
| 250 bar | | (90) | | | | | |
| | | 284 | | Collettore possibile in AL togliendo "A" Available aluminium body without "A" | | | |



CARATTERISTICHE

| | |
|---------------------------------|-----------------------------------|
| Luca nominale | DN 8/10 |
| Portata min/max | 1/60 l/min - 0.26/15.9 GPM |
| Pressione max. di picco | 450 bar - 6525 PSI |
| Pressione max. di taratura | 350 bar - 5075 PSI |
| Rapporto di pilotaggio standard | 4.25 : 1 |
| Temperatura ambiente | -30°C + 50°C |
| Temperatura olio | -30°C + 80°C |
| Filtraggio consigliato | 30 micron |
| Peso | |

PERFORMANCE

| |
|------------------------|
| Rated size |
| Min/max flow-rate |
| Max peak pressure |
| Max setting pressure |
| Standard pilot ratio |
| Room temperature |
| Oil temperature |
| Recommended filtration |
| Weight |

NOTE:

La taratura deve essere **1.3** volte maggiore della pressione indotta dal carico.

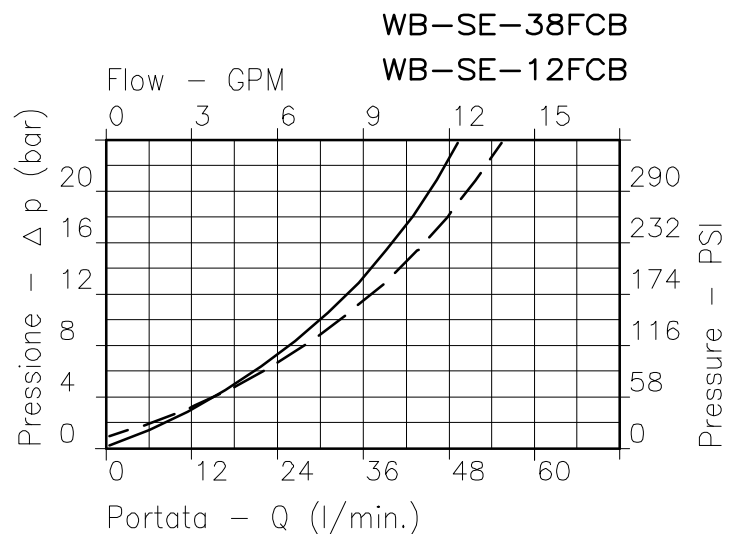
Valve should be set at **1.3** times load induced pressure.

ESEMPIO/EXAMPLE:

Pressione di lavoro max:

Max working pressure:

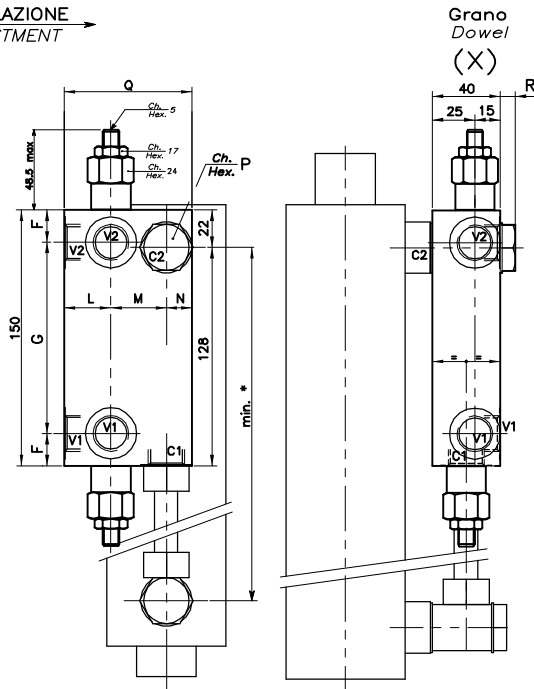
350 bar / 1.3 = 270 bar



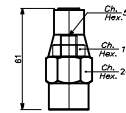
V2 — — C2 C2 — — V2

Viscosità olio 46 cSt a 50°C
Oil viscosity 46 cSt at 50°C

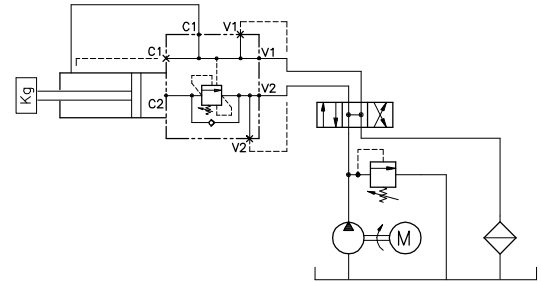
REGOLAZIONE
ADJUSTMENT →



Piombata
Sealed
(K)



ESEMPIO TIPICO DI CIRCUITO TYPICAL CIRCUIT EXAMPLE



DIMENSIONI DIMENSIONS

| Campo taratura Setting range | F | G | L | M | N | P | Q | R | Attacchi Port size V1-C1 V2-C2 GAS (BSPP) | Coppia serr. Bullone Tightening torque for Bolt NM | Portata max Max flow-rate l/min - GPM |
|---------------------------------|----|-----|----|----|----|----|----|----|---|--|---|
| 288 | 21 | 108 | 25 | 27 | 13 | 22 | 65 | 9 | 3/8" | 63÷71 | 40-10 |
| 289 | 19 | 112 | 27 | 32 | 16 | 27 | 72 | 10 | 1/2" | 75÷85 | 60-15 |

CODICE DI ORDINAZIONE HOW TO ORDER

N01 . 288 . 0 X 0 . A

Campo taratura / Setting range

288

289

Campo taratura 60÷350 bar (molla colore giallo)
Setting range 60÷350 bar (yellow spring)

Taratura standard (Q=5 l/1')
Std. bar setting Q=5 l/1')

250 bar

Incr. press. - bar giro/vite
Pressure rise - turn of screw
(90)

Rapporto
di pilotaggio
Pilot ratios

O 4,25 : 1
D 8 : 1

Regolazione
Adjustment

X Grano - Dowel
K Piombata - Sealed

Collettore
Body

A Acciaio
zincato
Zinc plated
steel

288

Collettore possibile in AL togliendo "A"
Available aluminium body without "A"